

Site	Russell Vale Colliery	DOC ID	RVC EC PLN 022
Type	Plan	Date Published	30 th May 2023
Doc Title	RVC POLLUTION INCIDENT RESPONSE MANAGEMENT PLAN		

Russell Vale Colliery

MP 09_0013

Pollution Incident Response Management Plan

RVC EC PLN 022

Site	Russell Vale Colliery	DOC ID	RVC EC PLN 022
Type	Plan	Date Published	30 th May 2023
Doc Title	RVC POLLUTION INCIDENT RESPONSE MANAGEMENT PLAN		

CONTENTS

1. INTRODUCTION	4
1.1. Location	4
1.2. Background	4
2. SCOPE	9
3. OBJECTIVES	9
4. DEFINITIONS	9
5. LEGISLATION	10
5.1. POEO Requirements for a PIRMP	10
5.2. Definition of a Pollution Incident and Material Harm	12
6. ROLES AND RESPONSIBILITIES	12
7. NOTIFICATION OF A POLLUTION INCIDENT	13
7.1. Timeframes for Reporting	13
7.2. Incident Response Process	13
7.3. Notification Protocol	14
7.3.1. Internal Stakeholders (Employees/Contractors)	14
7.3.2. Government Agencies	14
7.3.3. Local Community	16
8. REPORTING AND INVESTIGATION	16
8.1. Procedure for Reporting an Incident	16
8.2. Relevant information to be given to authorities	17
9. EMERGENCY RESPONSE	17
10. INVENTORY OF POLLUTANTS	17
11. DESCRIPTION AND LIKELIHOOD OF HAZARDS	18
12. PRE-EMPTIVE ACTIONS TO BE UNDERTAKEN	21
13. MINIMISATION OF HARM TO PERSONS ON THE PREMISES	22
14. EQUIPMENT FOR CONTROLLING OR CONTAINING A POLLUTION INCIDENT	22
15. TRAINING	22
16. PLAN ADMINISTRATION	23
16.1. Availability of Plan	23
16.2. PIRMP Testing	23
16.3. PIRMP Review	23
17. PENALTIES FOR NON-COMPLIANCE	23
18. REFERENCES AND ASSOCIATED DOCUMENTS	24
19. CONTROL AND REVISION HISTORY	24

Site	Russell Vale Colliery	DOC ID	RVC EC PLN 022
Type	Plan	Date Published	30 th May 2023
Doc Title	RVC POLLUTION INCIDENT RESPONSE MANAGEMENT PLAN		

TABLES

Table 1: Russell Vale Colliery Details	4
Table 2: Definitions	9
Table 3: POEO Requirements for PIRMP	10
Table 4: Roles and Responsibilities	13
Table 5: RVC Key Contacts	15
Table 6: External Agencies Contact Details	15
Table 7: Hazard Assessment Summary	18

FIGURES

Figure 1: RVC Mine Lease Area.....	5
Figure 2: RVC Pit Top Area and Hazardous Materials.....	6
Figure 3: RVC Water Management System	7
Figure 4: No 4 Shaft	8
Figure 5: Incident Response Process.....	14

Site	Russell Vale Colliery	DOC ID	RVC EC PLN 022
Type	Plan	Date Published	30 th May 2023
Doc Title	RVC POLLUTION INCIDENT RESPONSE MANAGEMENT PLAN		

1. INTRODUCTION

1.1. Location

The details of Russell Vale Colliery (RVC) as defined in the Environment Protection Licence (EPL) 12040 are summarised in **Table 1**. The location and extent of the RVC facilities are illustrated in **Figure 1** to **Figure 4: No 4 Shaft**

Table 1: Russell Vale Colliery Details

Licensee:	Wollongong Resources Pty. Ltd.
EPL Number	12040
Postal Address:	PO Box 281, Fairy Meadow NSW 2519
Scheduled Activities:	Coal works (0-2,000,000 T annual handling capacity) Mining for coal (> 500,000-2,000,000 T annual production capacity)
Facility Name:	Russell Vale Colliery
Facility Address:	7 Princes Highway, Corimal NSW 2518

1.2. Background

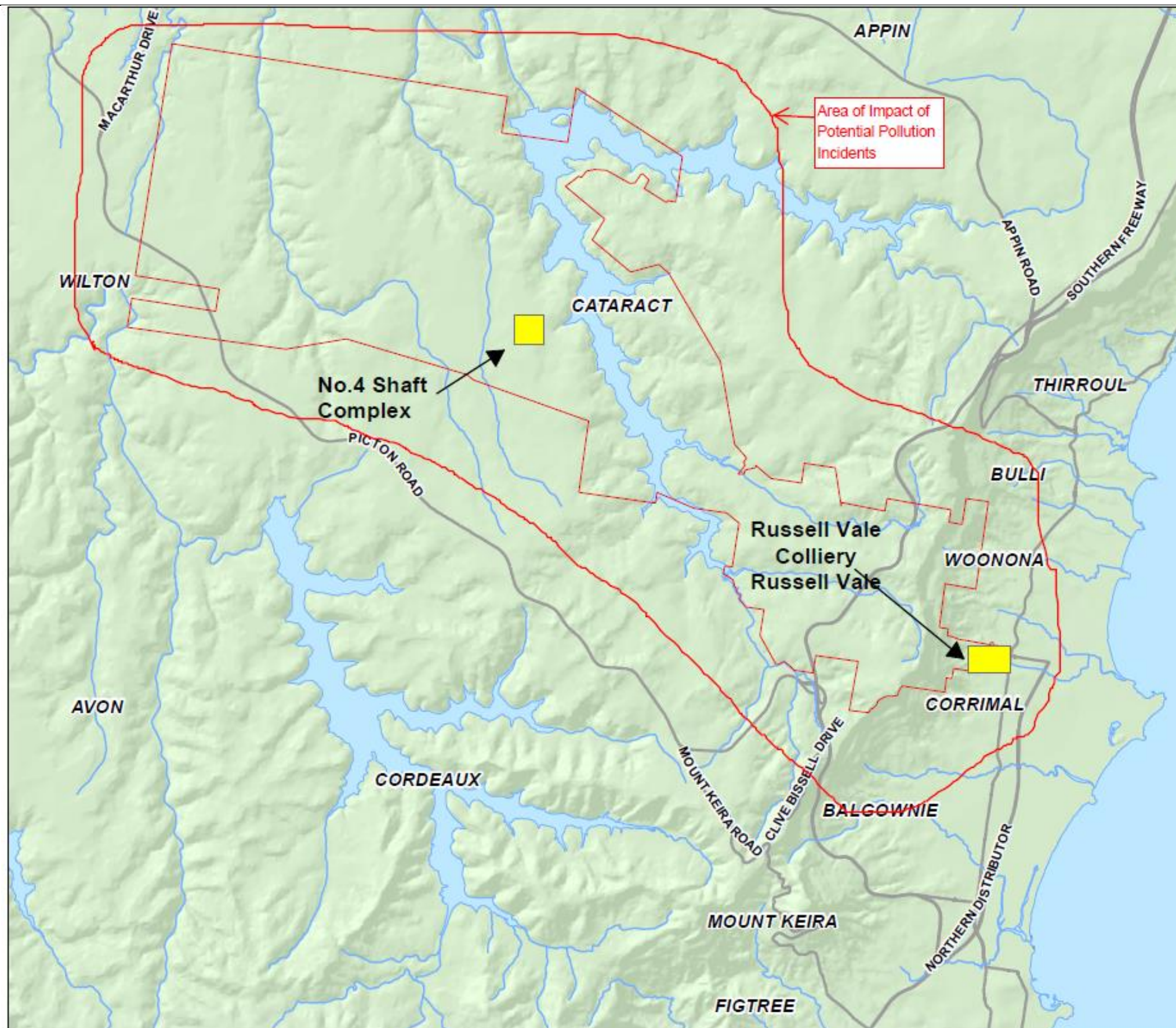
Wollongong Resources Pty. Ltd. (WRPL) operates the RVC in the Southern Coalfields of New South Wales. The mine is located at Russell Vale approximately 8 km north of Wollongong and 70 km south of Sydney, within the local government areas (LGAs) of Wollongong and Wollondilly in the Illawarra region of NSW.

The mine comprises the Consolidated Coal Lease (CCL) 745, Mining Purposes Lease (MPL) 271 and Mining Lease (ML) 1575 which covers a total area of 6,545 ha. The eastern portion of the lease is located on the Illawarra Escarpment with the crest of the Escarpment is approximately 400 m Australian Height Datum (AHD), sloping steeply down to the foothills at approximately 30 m AHD. The Illawarra escarpment is heavily vegetated.

The Russell Vale site is located on the lower slopes and foothills of the Escarpment at approximately 140 m AHD. The Russell Vale site is bounded by the Princes Highway to the east, with residential areas of Russell Vale and Corimal to the east and south respectively. The No.4 shaft site is located west of the Russell Vale site and North of Picton Road on the Illawarra Escarpment.

This mine has been operating since 1887 and the surface facilities have operated at the Russell Vale site since this time. The mine recently recommenced mining operations in 2021 following a period of time on care and maintenance.

Site	Russell Vale Colliery	DOC ID	RVC EC PLN 022
Type	Plan	Date Published	30 th May 2023
Doc Title	RVC POLLUTION INCIDENT RESPONSE MANAGEMENT PLAN		



Russell Vale Mine Lease Area

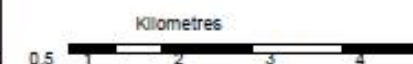
Legend

- Lease Area
- Major Waterbodies (LPI)
- Major Watercourses (LPI)
- Major Roads (LPI)



Figure 1: RVC Mine Lease Area

1:100,000 Scale at A4



Map Produced by Cardno NSWIACT Pty Ltd (WOL)
 Date: 2012-08-31
 Coordinate System: GDA 1994 MGA Zone 56
 Project: 112079_01
 Map: G1003_OverviewPlan.mxd 03

Site	Russell Vale Colliery	DOC ID	RVC EC PLN 022
Type	Plan	Date Published	30 th May 2023
Doc Title	RVC POLLUTION INCIDENT RESPONSE MANAGEMENT PLAN		



**Russell Vale
Colliery
Russell Vale**

**HAZARDOUS GOODS AND
EMERGENCY RESPONSE
EQUIPMENT**

Legend

- Bulk LPG Tank
- Diesel Tanks
- Diesel Tanks in Ground
- Fire Hydrants
- Fire Station
- Gas Cylinder Store
- Roads
- Cadastre (LPI, 2011)
- Buildings



**Figure 2: RVC Pit Top Area and
Hazardous Materials**
1:6,000 Scale at A4



Map Produced by Cardno NSWACT Pty Ltd (WOL)
Date: 2012-05-29
Coordinate System: GDA 1994 MGA Zone 58
Project: 112079_01
Map: G1002_PRRMP_RussellValeSitePlan.mxd 02
Aerial Imagery supplied by NearMap
and associated third party suppliers (July 2012)

Site	Russell Vale Colliery	DOC ID	RVC EC PLN 022
Type	Plan	Date Published	30 th May 2023
Doc Title	RVC POLLUTION INCIDENT RESPONSE MANAGEMENT PLAN		



Clean and Dirty Stormwater

RUSSELL VALE COLLIERY

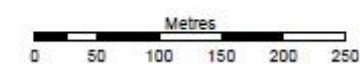
Legend

- Project Application Area
- 10m Contours (LPI)
- ➔ Flowpath
- Conveyor
- Roads
- Buildings
- Clean Water
- Dirty Water
- First Flush



Figure 3: RVC Water Management System

1:5,000 Scale at A3



Map Produced by Cardno NSWACT Pty Ltd (WOL)
 Date: 2012-11-12
 Coordinate System: GDA 1994 MGA Zone 56
 Project: NA82013012_01
 Map: G1010_CleanDirtyStormWater.mxd 02
 Aerial imagery supplied by NearMap (July 2012)

Site	Russell Vale Colliery	DOC ID	RVC EC PLN 022
Type	Plan	Date Published	30 th May 2023
Doc Title	RVC POLLUTION INCIDENT RESPONSE MANAGEMENT PLAN		



Russell Vale Colliery No.4 Shaft Complex

HAZARDOUS GOODS AND EMERGENCY RESPONSE EQUIPMENT

Legend

- Bulk LPG Tank
- Diesel Tanks
- Diesel Tanks in Ground
- Fire Hydrants
- Fire Station
- Gas Cylinder Store
- Buildings



Figure 4: No 4 Shaft

1:2,000 Scale at A4



Map Produced by Cardno NSW/ACT Pty Ltd (WOL)
Date: 2012-08-29
Coordinate System: GDA 1994 MGA Zone 58
Project: 112079_01
Map: G1001_PIRMP_Shaf48SitePlan.mxd 02
Aerial imagery supplied by Nearmap
and associated third party suppliers (July 2012)

Site	Russell Vale Colliery	DOC ID	RVC EC PLN 022
Type	Plan	Date Published	30 th May 2023
Doc Title	RVC POLLUTION INCIDENT RESPONSE MANAGEMENT PLAN		

2. SCOPE

This Pollution Incident Response Management Plan (PIRMP) has been prepared in accordance with Part 5.7A Section 153A of the Protection of the Environment Operations Act 1999 (POEO Act) and Part 3A Section 98C of the Protection of the Environment Operations (General) Regulation 2009 (POEO Regulation).

The PIRMP forms part of the Environmental Managements Strategy (EMS) for the mine and will be reviewed and updated on a regular basis. The PIRMP includes the systems and procedures implemented to manage the various incidents that may occur at, or be associated with, the activities that take place at RVC that are likely to cause material harm to the environment.

3. OBJECTIVES

The objectives of this PIRMP are in line with the *NSW Environmental Protection Agency (EPA), 2012, 'Environmental Guidelines: Preparation of pollution incident response management plans*:

- ensure comprehensive and timely communication of a pollution incident to staff at the premises, the EPA, and other relevant authorities specified in the Act (such as the Department of Planning and Environment (DPE), local councils, Public Health, SafeWork NSW, and Fire and Rescue NSW) and people outside of the facility (community members) who may be affected by the impacts of the pollution incident;
- minimise and control the risk of a pollution incident at the facility by requiring identification of risks and the development of planned actions to minimise and manage those risks; and
- ensure that the plan is properly implemented by trained staff, identifying persons responsible for implementing it, and ensuring that the plan is regularly tested for accuracy, currency, and suitability.

4. DEFINITIONS

Definitions of key terms and abbreviations used in this procedure are addressed in **Table 2**.

Table 2: Definitions

Term	Definition
AHD	Australian Height Datum
Chemwatch	Chemical management database
Consolidated Coal Lease (CCL)	A lease where several mining leases have been consolidated into one. CCLs were established under the <i>Mining Act 1973</i> and are no longer granted. Some CCLs however remain active.
CRO	Control Room Operator
DPE	Department of Planning and Environment
Emergency services	Ambulance, Fire Brigade, Police
EPA	Environment Protection Authority

Site	Russell Vale Colliery	DOC ID	RVC EC PLN 022
Type	Plan	Date Published	30 th May 2023
Doc Title	RVC POLLUTION INCIDENT RESPONSE MANAGEMENT PLAN		

EPL	Environment Protection License
m	meters
ML	Mining Lease
NSW	New South Wales
PIRMP	Pollution Incident Response Management Plan
POEO Act	Protection of the Environment Operations Act 1997 No 156
RVC	Russell Vale Colliery
SDS	Safety Data Sheet
TARP	Trigger Action Response Plan
WRPL	Wollongong Resources Pty. Ltd.
RVC	Russell Vale Colliery

5. LEGISLATION

5.1. POEO Requirements for a PIRMP

Table 3 addresses the relevant statutory requirements as detailed in the POEO Act and POEO Regulation 2009 for inclusion in the PIRMP and where each requirement is described in the plan

Table 3: POEO Requirements for PIRMP

Requirements	PIRMP Section
Notification Procedures – POEO Act Section 148, 149	7
Action to be taken following a pollution incident – POEP Action Section 153C(b) and 153F	7,9
Procedures for coordinating with the EPA, Local Council, Ministry of Health, WorkCover Authority and Fire and Rescue NSW – POEO Act 153C(c)	7.3.2
Description of hazards to human health or environment associated with the relevant activity – POEO Act Section 153C (d) and POEO Regulation 98C (1)(a)	Table 7
Likelihood of hazards occurring – POEO Act Section 153C (d) and POEO Regulation 98C (1)(b)	Table 7
Pre-emptive actions to minimise or prevent risk of harm to human health or environment – POEO Act Section 153C (d) and POEO Regulation 98C(1)(c)	12
Inventory of potential pollutants – POEO Act Section 153C (d) and POEO Regulation 98C(1)(d)	10
Maximum quantity of pollutant to which the licence relates – POEO Act Section 153C (e)	10

Site	Russell Vale Colliery	DOC ID	RVC EC PLN 022
Type	Plan	Date Published	30 th May 2023
Doc Title	RVC POLLUTION INCIDENT RESPONSE MANAGEMENT PLAN		

Safety equipment to minimise the risks to human health or environment – POEO Act Section 153C (d) and POEO Regulation 98C(1)(f)	14
Names, positions and contact details – POEO Act Section 153C (d) and POEO Regulation 98C(1)(g)	Table 5
Contact details of each relevant authority- POEO Act Section 148 and POEO Regulation 98C(1)(h)	Table 6
Early warning mechanism for people off site – POEO Act Section 153C(a), (d) and POEO Regulation 98C(1)(i)	13
Arrangements for minimising risk of harm to persons on the premises – POEO Act Section 153C(d) and POEO Regulation 98C(1)(j)	13
Detailed maps – POEO Regulation 98C(1)(k)	Figure 1 Figure 2 Figure 3 Figure 4
Description of how any identified risk of harm to human health will be reduced, including early warnings, updates and action to be taken - POEO Regulation 98C(1)(l)	7,12,13
Training - POEO Act Section 153C(d) and POEO Regulation 98C(1)(m)	15
Testing of plan – POEO Act Section 153(d) and Section 153E and POEO Regulation 98C(n) and 98E	16.2
Updating of plan - POEO Act Section 153F and POEO Regulation 98C(o) and 98E(2)(b)	16.3
Manner in which plan is tested and maintained – POEO Act Section 153C(d) and POEO Regulation 98C(1)(p)	16.2
Availability of plan – POEO Act 153D and POEO Regulation 98D	16.1

Site	Russell Vale Colliery	DOC ID	RVC EC PLN 022
Type	Plan	Date Published	30 th May 2023
Doc Title	RVC POLLUTION INCIDENT RESPONSE MANAGEMENT PLAN		

5.2. Definition of a Pollution Incident and Material Harm

The POEO Act defines a 'pollution incident' as being:

'Pollution incident means an incident or set of circumstances during or as a consequence of which there is or is likely to be a leak, spill or other escape or deposit of a substance, as a result of which pollution has occurred, is occurring or is likely to occur. It includes an incident or set of circumstances in which a substance has been placed or disposed of on premises, but it does not include an incident or set of circumstances involving only the emission of any noise'.

Notifications of a pollution incident are required if there is a risk of 'material harm to the environment', which is defined in Section 147 of the POEO Act as:

- A. *harm to the environment is material if:*
 - i. *it involves actual or potential harm to the health or safety of human beings or to ecosystems that is not trivial, or*
 - ii. *it results in actual or potential loss or property damage of an amount, or amounts in aggregate, exceeding \$10,000 (or such other amount as is prescribed by the regulations), and*
- B. *loss includes the reasonable costs and expenses that would be incurred in taking all reasonable and practicable measures to prevent, mitigate or make good harm to the environment.*

The POEO Act defines 'pollution' in the following terms:

'pollution' means

- a. *water pollution; or*
- b. *air pollution, or*
- c. *noise pollution; or*
- d. *land pollution.*

Material harm can occur both on land located within the EPL boundary, along with land located outside the EPL boundary. A determination of a material harm incident will be made by the Environment Manager.

If the Environment Manager is not immediately available, then determination can be made by a WRPL Manager.

If the Environment Manager or Managerial delegate cannot be contacted, then the RVC Control Room Operator (CRO) must treat the incident as a material harm incident and initiate reporting to the relevant agencies listed in **Table 6**.

6. ROLES AND RESPONSIBILITIES

The roles and responsibilities of WRPL personnel are defined in **Table 4**.

Site	Russell Vale Colliery	DOC ID	RVC EC PLN 022
Type	Plan	Date Published	30 th May 2023
Doc Title	RVC POLLUTION INCIDENT RESPONSE MANAGEMENT PLAN		

Table 4: Roles and Responsibilities

Role	Responsibilities
General Manager/Mine Manager	<ul style="list-style-type: none"> Coordinate media response(s)
Management Team	<ul style="list-style-type: none"> Undertake Environment Manager responsibilities in their absence
Environment Manager	<ul style="list-style-type: none"> Implementation and maintenance of this PIRMP Assess materiality of incident and activate relevant response system Assess potential for off-site impacts Notify internal stakeholders as appropriate Notify relevant agencies Coordinate annual PIRMP testing
Environment Coordinator	<ul style="list-style-type: none"> Support the Environment Manager in their responsibilities
Control Room Operator	<ul style="list-style-type: none"> Coordination of initial emergency response and internal notifications
Site Personnel	<ul style="list-style-type: none"> Report actual or potential incidents immediately Assist in site response and clean-up activities

7. NOTIFICATION OF A POLLUTION INCIDENT

As a minimum, all employees are required to report all hazards, accidents and incidences which occur in the workplace that either have the potential to, or have caused harm, to personnel, property, or the environment.

The specific responsibilities associated with this PIRMP are outlined in **Table 4**.

7.1. Timeframes for Reporting

If a pollution incident occurs at the premises that causes, or threatens to cause, material harm to the environment, this PIRMP will be implemented. All pollution incidents causing or threatening to cause material harm to the environment are to be reported in accordance with **Section 7.2**.

7.2. Incident Response Process

The process for responding to an incident that has resulted in a material impact to human health or the environment (as per the definition provided in **Section 5.2** of this plan), is shown in **Figure 5: Incident Response Process**

Site	Russell Vale Colliery	DOC ID	RVC EC PLN 022
Type	Plan	Date Published	30 th May 2023
Doc Title	RVC POLLUTION INCIDENT RESPONSE MANAGEMENT PLAN		

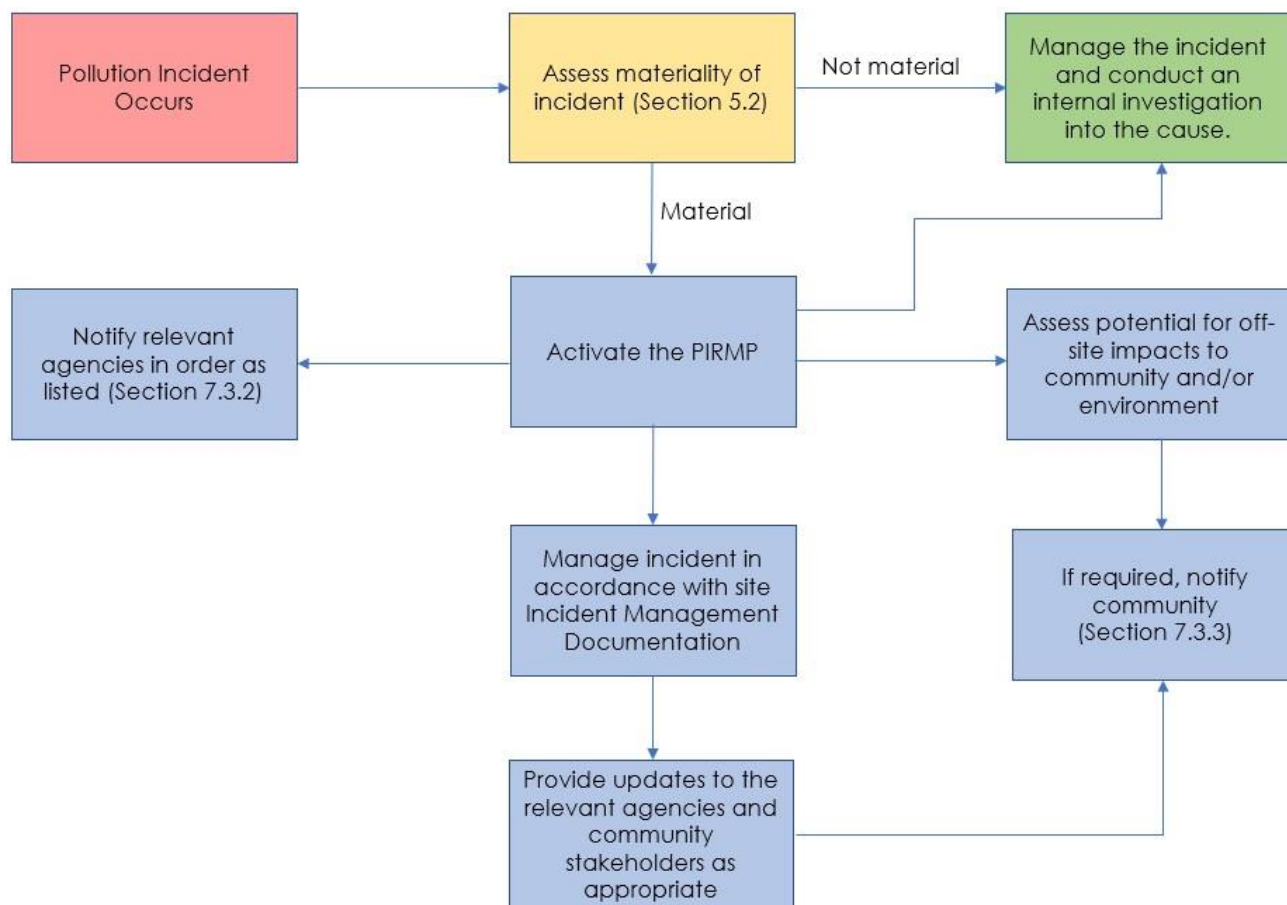


Figure 5: Incident Response Process

7.3. Notification Protocol

7.3.1. Internal Stakeholders (Employees/Contractors)

In the event of an incident that requires an emergency response for site personnel, the emergency response control plan (RVC MIN PLN 014) will be activated.

7.3.2. Government Agencies

The key contacts responsible for notifying the relevant government agencies are provided in **Table 5**.

Site	Russell Vale Colliery	DOC ID	RVC EC PLN 022
Type	Plan	Date Published	30 th May 2023
Doc Title	RVC POLLUTION INCIDENT RESPONSE MANAGEMENT PLAN		

Table 5: RVC Key Contacts

Position	Contact Details
RVC Mine Manager	Refer to internal telephone directory
Environment Manager	Refer to internal telephone directory
RVC Control Room Operator	Shift Operator - (02) 4223 6827

The government agencies provided in **Table 6** must be immediately notified (i.e. promptly and without delay) of a pollution incident that has caused, or has the potential to cause material harm. The agencies must be notified as listed (i.e. from top to bottom of the table) if deemed appropriate based on the nature of the incident. The order of contact is important. If an incident represents an immediate threat to human health and/or property, call 000 and speak with the relevant first responders immediately for assistance.

Table 6: External Agencies Contact Details

External Agency	Contact Details
Emergency Response Agencies (Fire & Rescue, Ambulance, Police)	000 (Emergency) 1300 729 579 (Pollution notification)
Environmental Protection Agency	131 555 ¹
Department of Planning and Environment	(02) 4247 1852 compliance@planning.nsw.gov.au
NSW Resource Regulator	1300 814 609 ² nswresouecesregulator@service-now.com
Public Health (Local Health District) – Illawarra and Shoalhaven	(02) 4221 6700 ³ ISLHD-PHU@health.nsw.gov.au
SafeWork NSW ⁴	13 10 50 ⁵
Wollongong City Council	(02) 4227 7111 ⁶
NSW State Emergency Services	132 500
Water NSW (Sydney Catchment Authority) (If incident occurs on WaterNSW owned land)	1300 662 077 ⁷ customer.helpdesk@waternsw.com.au

1 Select Option 1

2 Office open between 8.30 am and 4.30 pm. Will be directed to on call person after hours

3 After hours (02) 4222 5000. Ask for Public Health Officer

4 SafeWork NSW do not regulate mines and therefore they should only be contacted where the incident has not occurred on the mine site

5 Select 2 and then Select 2

6 Ask for Environmental Planning Manager

7 Select 6, then select 3

Site	Russell Vale Colliery	DOC ID	RVC EC PLN 022
Type	Plan	Date Published	30 th May 2023
Doc Title	RVC POLLUTION INCIDENT RESPONSE MANAGEMENT PLAN		

7.3.3. Local Community

Community stakeholders that are potentially affected by a pollution incident causing or having the potential to cause material harm will be notified immediately (i.e. promptly and without delay) by one (or more) of the following methods:

- door knocking by company representatives or emergency services personnel;
- phone call by a company representative;
- other methods as determined by the Environment Manager.

If required (dependent on the nature of the incident) the communication should identify the practical things the community members can do to minimise the risk of harm to their health or property during and after the incident. This may include instructions to close windows and doors and remain inside, avoid accessing water in creeks and rivers, or avoid using groundwater.

Regular updates will be provided to the affected community stakeholders throughout the course of the event.

Signage will be utilised to notify the community (where practical and required) if there is an incident on land outside of the premises where members of the community may be exposed to a hazard (injury or illness).

8. REPORTING AND INVESTIGATION

All Environmental incidents are to be reported to and investigated by the Environment Manager.

An incident notification and investigation report form (WCL HS FRM 001) must be completed by the first responding employee at all environmental incidents, before they leave site.

8.1. Procedure for Reporting an Incident

Upon discovery of an incident, it is the responsibility of the first responder to initiate the clean-up procedure, mobilise site personnel for assistance, and notify the relevant internal and external parties.

Where an incident represents an immediate threat to human health or property, the first point of contact should be to the Emergency response hotline, by dialling triple zero (i.e. 000).

If the incident does not require an initial emergency response, or once the triple zero (i.e. 000) call has been made, in accordance with the EPA notification protocol, the Environment Manager or managerial delegate must be notified. If contact cannot be made with the personnel in **Table 5**, then the RVC CRO should be notified.

Once notified of an incident, it is the responsibility of the Environment Manager, managerial delegate, or the RVC CRO to activate the PIRMP, if required, and notify the relevant authorities.

Site	Russell Vale Colliery	DOC ID	RVC EC PLN 022
Type	Plan	Date Published	30 th May 2023
Doc Title	RVC POLLUTION INCIDENT RESPONSE MANAGEMENT PLAN		

8.2. Relevant information to be given to authorities

Section 150 of the POEO Act outlines the relevant information that must be provided when notifying the authorities about a pollution incident:

- The time, date, nature, duration and location of the incident;
- the location of the place where pollution is occurring or is likely to occur;
- the nature, the estimated quantity or volume and the concentration of any pollutants involved, if known;
- the circumstances in which the incident occurred (including the cause of the incident, if known);
- the action taken or proposed to be taken to deal with the incident and any resulting pollution or threatened pollution, if known;
- other information prescribed by the regulations.

If the information required to be included in a notice of a pollution incident by subsection is not known to that person when the initial notification is made but becomes known afterwards, that information must be notified immediately after it becomes known.

9. EMERGENCY RESPONSE

WRPL maintains an emergency response control plan (RVC MIN PLN 014) for the premises, which outlines the immediate on-site response to an incident. It defines the roles and responsibilities of key site personnel and provides information on evacuation protocols and muster points. The emergency response control plan (RVC MIN PLN 014) is to be applied concurrently with the PIRMP.

If there is an emergency on site, the person who discovers it must initiate the emergency response by notifying the RVC CRO, either by telephone, radio, or other means.

The CRO will activate the procedures in the WRPL emergency response control plan (RVC MIN PLN 014) and update the system as the incident progresses.

Surface personnel will assemble at the appropriate muster point and will await instruction from the person assuming the role of the *Incident Controller*. If evacuation is not required, personnel will remain on site and assist in the management and containment of the emergency as per the instruction of the *Incident Controller*.

The *Incident Controller* will communicate with emergency services personnel to identify the appropriate actions to be taken.

10. INVENTORY OF POLLUTANTS

Site inspections of storage facilities are periodically conducted to ensure that potential pollutants are stored appropriately and that an accurate inventory of potential pollutants is maintained.

A copy of the National Code of Practice Compliant Safety Data Sheets (SDS) for each hazardous material is maintained within the SDS register and on Chemwatch.

WRPL maintains a hazardous substance and dangerous goods procedure (RVC HS PRO 005).

Site	Russell Vale Colliery	DOC ID	RVC EC PLN 022
Type	Plan	Date Published	30 th May 2023
Doc Title	RVC POLLUTION INCIDENT RESPONSE MANAGEMENT PLAN		

11. DESCRIPTION AND LIKELIHOOD OF HAZARDS

The assessment of pollution and other incidents with potentially material consequences are provided in **Table 7**. Regardless of whether a particular incident is captured within the hazard assessment table, any pollution incident with the potential for material consequences will be addressed as per the incident management guidelines of this plan.

Table 7: Hazard Assessment Summary

Hazard	Fire		
Storage ID	N/A		
Cause	<ul style="list-style-type: none"> ▪ Drought conditions ▪ Surrounding bushland producing high fuel load ▪ Lightning strike ▪ Arson 		
Impact	<ul style="list-style-type: none"> ▪ Damage to site storage facilities leading to the potential release of materials causing water and/or land pollution ▪ Inability to safely access/exit site ▪ Potential for explosion (dependent on storages impacted) ▪ Potential for coal stockpile fire resulting in the release of air pollutants including fine particulates, heavy metals and various oxides. 		
Likelihood	Low	Material Harm	High
Controls	<ul style="list-style-type: none"> ▪ Bushfire Management Plan (RVC EC PLN 026) ▪ Maintenance of asset protection zones ▪ Coal stockpile dust suppression sprays ▪ Water sources available for fire fighting ▪ WRPL Emergency Response Team 		
Actions	<ul style="list-style-type: none"> ▪ Contact Fire and Rescue NSW – 000 (Emergency). ▪ Actions to be taken are dependent on the impact of the fire ▪ Initiate emergency response control plan (RVC MIN PLN 014) if necessary by contacting the RVC CRO. ▪ Activate PIRMP if there is actual or potential material environmental harm 		
Hazard	Flood		
Storage ID	N/A		
Cause	Rainfall		
Impact	<ul style="list-style-type: none"> ▪ Overflow of site storage facilities leading to the potential release of materials causing water and/or land pollution ▪ Inability to safely access/exit site ▪ Slope instability 		

Site	Russell Vale Colliery	DOC ID	RVC EC PLN 022
Type	Plan	Date Published	30 th May 2023
Doc Title	RVC POLLUTION INCIDENT RESPONSE MANAGEMENT PLAN		

	<ul style="list-style-type: none"> Scour erosion and sediment movement Damage to site infrastructure 		
Likelihood	Low	Material Harm	High
Controls	<ul style="list-style-type: none"> Routine inspections of water infrastructure Maintenance of dams, sumps, pumps and bunds Weather forecasts Underground water storages WRPL Emergency Response Team 		
Actions	<ul style="list-style-type: none"> Actions to be taken are dependent on the impact of flooding Initiate emergency response control plan (RVC MIN PLN 014) if necessary by contacting the RVC CRO. Activate PIRMP if there is actual or potential material environmental harm 		
Hazard	Bulk diesel spill		
Storage ID	Fuel Bay – 10,000 Litre horizontal tank		
Cause	<ul style="list-style-type: none"> Tank integrity failure Impact on storage by mobile equipment Diesel transfer incident 		
Impact	<ul style="list-style-type: none"> Contamination of surrounding waterways and land 		
Likelihood	Very Low	Material Harm	Medium
Controls	<ul style="list-style-type: none"> Tank located in a concrete bunded area Routine inspection of storage area Spill response equipment readily available 		
Actions	<ul style="list-style-type: none"> Contain/Control the source Minimise spread into drains/waterways Remove or treat contaminated materials Arrange for tanker to recover contaminated water and dispose at a licenced waste facility (if needed). Activate PIRMP if there is actual or potential material environmental harm 		
Hazard	Spills (chemicals and hydrocarbons)		
Storage ID	Fuel Bay, storage yard, water treatment plant		
Cause	<ul style="list-style-type: none"> Chemical & Oil handling incident Chemical & Oil storages impacted by surface mobile equipment Overflow of bunding 		

Site	Russell Vale Colliery	DOC ID	RVC EC PLN 022
Type	Plan	Date Published	30 th May 2023
Doc Title	RVC POLLUTION INCIDENT RESPONSE MANAGEMENT PLAN		

Impact	Contamination of site water management system, including sediment ponds, or contamination of land.		
Likelihood	Low	Material Harm	Medium
Controls	<ul style="list-style-type: none"> Tanks located in a concrete bunded area Spill response/clean up equipment readily available Routine inspection of storages Ability to transfer water out of sediment dams to minimise potential releases to the environment 		
Actions	<ul style="list-style-type: none"> Isolate and contain spill Arrange for tanker to recover contaminated water and dispose at a licenced waste facility (if needed). Activate PIRMP if there is actual or potential material environmental harm 		
Hazard	Loss of contaminated water to the local environment		
Storage ID	Site dams and sumps		
Cause	<ul style="list-style-type: none"> Dam wall failure Blockage of drains/ pipelines Overflow due to heavy rainfall Transfer pump failure 		
Impact	Contamination of surrounding waterways and land		
Likelihood	Low	Material Harm	Medium
Controls	<ul style="list-style-type: none"> Routine inspections of dams Routine water quality sampling Routine pump maintenance 		
Actions	<ul style="list-style-type: none"> Arrange for tanker to recover contaminated water and dispose at a licenced waste facility (if needed). Activate PIRMP if there is actual or potential material environmental harm 		
Hazard	Dust from coal stockpiles and unsealed areas		
Storage ID	Stockpile areas		
Cause	<ul style="list-style-type: none"> Extreme weather Friable coal quality Dust suppression failure 		
Impact	Contamination of surrounding waterways and land		
Likelihood	Medium	Material Harm	Low

Site	Russell Vale Colliery	DOC ID	RVC EC PLN 022
Type	Plan	Date Published	30 th May 2023
Doc Title	RVC POLLUTION INCIDENT RESPONSE MANAGEMENT PLAN		

Controls	<ul style="list-style-type: none"> ▪ Dust suppression and water carts ▪ Truck and wheel wash ▪ routine inspections and maintenance ▪ recycled water, pumps and excavators available on site to clean up deposition of coal material
Actions	<ul style="list-style-type: none"> ▪ Arrange for tanker to recover contaminated material and dispose at a licenced waste facility (if required). ▪ Activate PIRMP if there is actual or potential material environmental harm

12. PRE-EMPTIVE ACTIONS TO BE UNDERTAKEN

Table 7 describes the specific pre-emptive actions that are in place to reduce the risk of harm to human health or the environment where a specific incident may occur. In addition to the actions outlined in **Table 7**, the following pre-emptive actions are implemented to reduce the risk of harm occurring as a result of a pollution incident:

- an established EMS;
- regular training for site personnel (outlined in **Section 15**);
- risk assessments undertaken prior to tasks and activities to identify risks to health, safety and the environment (includes SLAMs, task analyses, qualitative risk assessments);
- routine monitoring of environmental parameters in accordance with the EPL and Water Management Plan;
- routine site inspections;
- Site induction process for new equipment arriving on site;
- pre-use inspections of site equipment to ensure safety and environmental standards are upheld;
- a maintenance schedule for site equipment and infrastructure;
- investigations of incidents, and implementation of corrective actions to prevent reoccurrence;
- pre-shift communications and toolbox talks delivered to site personnel to communicate incidents, hazards and corrective actions;
- internal governance reviews undertaken to confirm compliance with site management plans;
- bunds installed for the appropriate storage of hazardous materials;
- a substance approval process for the introduction of new chemicals to site; and
- Independent Environmental Audits undertaken on a triennial basis to assess compliance against the conditions in the Project Approval and EPL.

Site	Russell Vale Colliery	DOC ID	RVC EC PLN 022
Type	Plan	Date Published	30 th May 2023
Doc Title	RVC POLLUTION INCIDENT RESPONSE MANAGEMENT PLAN		

13. MINIMISATION OF HARM TO PERSONS ON THE PREMISES

Actions and arrangements are in place to minimise the risk of harm to any persons known to be on the premises, or who are likely to be on the premises, should an incident occur. These actions and arrangements include:

- access to site is restricted to inducted (or otherwise approved) persons;
- access to high risk areas within the site are restricted to appropriately qualified personnel;
- site personnel are informed, trained, and competent, relating to their responsibility during an emergency;
- emergency response teams have been established and undertake regular training;
- fire alarms are in place;
- evacuation points are clearly recognised on site by appropriate signage;
- signage is in place where hazardous materials are stored; and
- minimum personal protective equipment (PPE) requirements are enforced.

14. EQUIPMENT FOR CONTROLLING OR CONTAINING A POLLUTION INCIDENT

The WRPL hazardous substances and dangerous goods procedure (RVC HS PRO 005) outlines the process to be followed in the event of a spill.

In addition, the WRPL Spill Trigger Action Response Plan (TARP) (WCL EC TARP 002) is made available in the Control Room for use in the event of a spill to determine the actions that need to be taken.

Other safety equipment and information available includes:

- personal protective equipment (hard hats, gloves, glasses, masks, goggles) are available from PPE dispensers and Stores;
- fire extinguishers and hydrants;
- gas monitors (available in Control Room);
- Chemical SDS (available in Control Room or electronically on ChemWatch); and
- eye wash stations and safety showers.

15. TRAINING

All site personnel will be made aware of the PIRMP during their site induction which is a pre-requisite for working on any WRPL controlled premises.

Personnel will participate in refresher training as part of the annual PIRMP testing requirements (outlined in **Section 16.2**).

Site	Russell Vale Colliery	DOC ID	RVC EC PLN 022
Type	Plan	Date Published	30 th May 2023
Doc Title	RVC POLLUTION INCIDENT RESPONSE MANAGEMENT PLAN		

16. PLAN ADMINISTRATION

16.1. Availability of Plan

In accordance with Section 153D of the POEO Act and Part 3A Section 98D of the POEO Regulation 2009, the plan will be made available to all site personnel via the site document control system.

The plan framework, protocols, and processes (public version) will be made available to the public on the WRPL website: www.wollongongresources.net.au

A copy of the public version of the plan will be provided to any person, free of charge, upon request.

A copy of the plan will be maintained at RVC. Copies will be made readily available to those responsible for its implementation, and at the request of any authorised officer.

16.2. PIRMP Testing

In accordance with Part 5.7A Section 153E of the POEO Act 1999 and Part 3A Section 98E of the POEO Regulation 2009, this plan will be tested at least once every 12 months and within one month of any pollution incident occurring. The purpose of testing is to ensure that the information contained within the plan is accurate, up to date, and that the plan is capable of being implemented in a workable and effective manner.

Desktop simulations are the primary method for testing this plan, but periodic practical exercises or drills may be used to supplement this approach. Activation of this plan during an actual event may also be considered as a test.

WRPL maintains a PIRMP Test form (WCL EC FRM 012) to provide staff with instruction on how to properly conduct an efficient, accurate and safe PIRMP Test.

A record of tests is provided in **Section 19**.

16.3. PIRMP Review

The PIRMP will be reviewed annually as part of the PIRMP Test procedure outlined in **Section 16.2**.

Updates to the PIRMP will occur when key personnel or regulatory agency contact details change or when there is an update to a site procedure.

The PIRMP is a controlled document, and as such, the document control process will be followed when updating the PIRMP.

17. PENALTIES FOR NON-COMPLIANCE

There are offences set out in the POEO Act in relation to PIRMP requirements. These relate to the failure to:

- prepare a PIRMP that complies with Part 5.7A of the POEO Act;
- ensure the PIRMP is kept at the premises the EPL relates to, and make parts of it available to the public; and
- test the PIRMP in accordance with the regulations.

The maximum penalties for the above offences are:

Site	Russell Vale Colliery	DOC ID	RVC EC PLN 022
Type	Plan	Date Published	30 th May 2023
Doc Title	RVC POLLUTION INCIDENT RESPONSE MANAGEMENT PLAN		

- for corporations - \$1,000,000, and for continuing offences, a further penalty of \$120,000 per day the offence continues; and
- for individuals - \$250,000, and for continuing offences, a further penalty of \$60,000 per day the offence continues.

It is also an offence if a person carrying out an activity does not implement the relevant PIRMP if a pollution incident occurs in the course of an activity, so material harm to the environment is caused or threatened.

The maximum penalties for this offence are:

- for corporations - \$2,000,000, and for continuing offences, a further penalty of \$240,000 per day the offence continues; and
- for individuals - \$500,000, and for continuing offences, a further penalty of \$120,000 per day the offence continues.

18. REFERENCES AND ASSOCIATED DOCUMENTS

- Protection of the Environment Operations (POEO) Act 1997
- Protection of the Environment Operations (General) Regulation 2009
- NSW EPA, 2012, 'Environmental Guidelines: Preparation of pollution Incident response management plans
- WRPL emergency response control plan (RVC MIN PLN 014)
- WRPL incident notification and investigation report form (WCL HS FRM 001)
- WRPL hazardous substance and dangerous goods procedure (RVC HS 005)
- RVC Bushfire Management Plan – (RVC EC PLN 026)
- WRPL Spill Trigger Action Response Plan (WCL EC TARP 002)
- WRPL Pollution Incident Response Management Plan (PIRMP) Test (WCL EC FRM 012)

19. CONTROL AND REVISION HISTORY

PROPERTY	VALUE
Approved by	Robert Faddy-Vrouwe
Document Owner	Environment Manager
Effective Date	30/05/2023

VERSION	DATE REVIEWED	REVIEW TEAM (CONSULTATION)	NATURE OF THE AMENDMENT
1	27/02/2015	K. Prajapati (WCL),	Testing and Management Plan Review
1.1	12/05/2016	K. Prajapati (WCL)	Testing and Management Plan Review

Site	Russell Vale Colliery	DOC ID	RVC EC PLN 022
Type	Plan	Date Published	30 th May 2023
Doc Title	RVC POLLUTION INCIDENT RESPONSE MANAGEMENT PLAN		

VERSION	DATE REVIEWED	REVIEW TEAM (CONSULTATION)	NATURE OF THE AMENDMENT
1.2	22/08/2017	K. Prajapati (WCL)	Testing and Management Plan Review
1.3	10/04/2018	E. Perez (SMEC)	Testing and Management Plan Review
1.4	17/05/2019	R. Faddy-Vrouwe (WCL)	Minor updates to content, Testing and Management Plan Review
1.5	18/05/2020	R. Faddy-Vrouwe	Minor updates to content, Testing and Management Plan Review
1.6	22/05/2020	R. Faddy-Vrouwe (WCL)	Minor updates to content, Testing and Management Plan Review
1.7	02/06/2021	R. Faddy-Vrouwe & S. Cugalj (WCL)	Review plan following PIRMP activation
1.8	19/7/2022	J. Allenby (WCL)	Minor updates to content, Testing and Management Plan Review
2	30/05/2023	R. Faddy-Vrouwe (WRPL)	Reviewed Management Plan and updated format for consistency with WWC & Avondale PIRMPs. Changed WCL to WRPL.